



The heart of
Incredible India

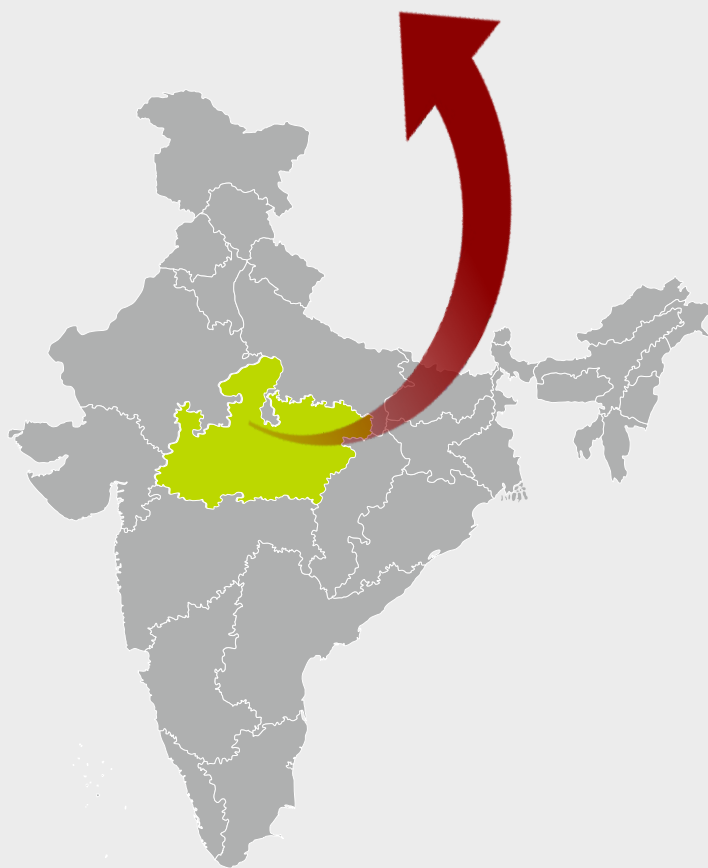
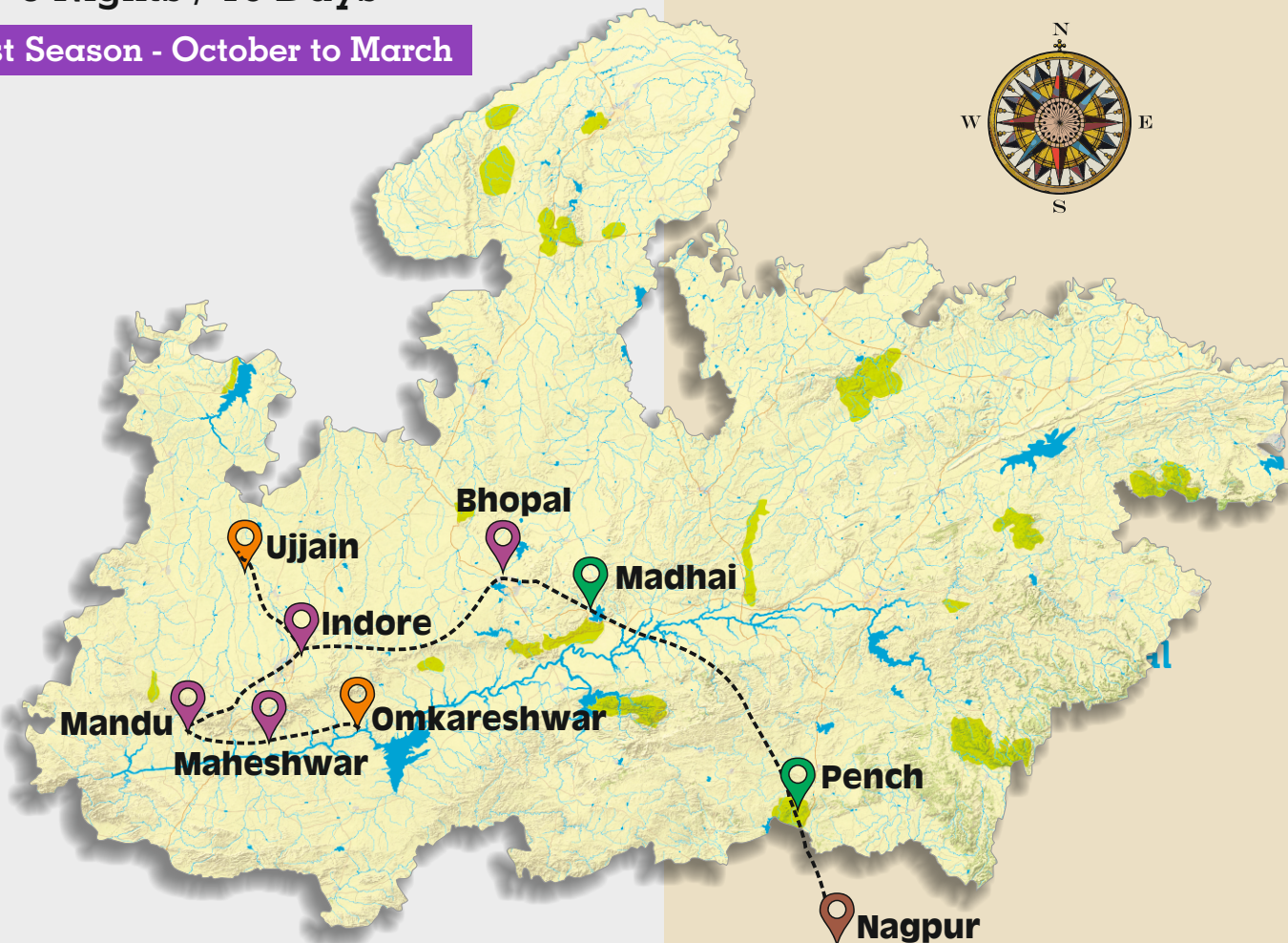
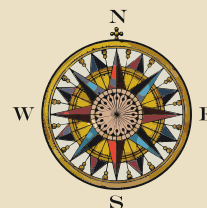
Gateway to the Heart of India!



WEST AND CENTRAL MADHYA PRADESH

9 Nights / 10 Days

Best Season - October to March



- Arrival from Mumbai/Delhi at Indore
- Omkareshwar (1N)
- Maheshwar (1N)
- Mandu (1 N)
- Ujjain (1N)
- Bhopal (2N) – Sanchi & Bhimbetka Day Tour
- Madhai (1N) – Jungle Safari
- Pench (2N) – Jungle Safari
- Departure from Nagpur

KEY HIGHLIGHTS



1

Visit Jyotirlinga
Omkareshwar Temple



2

Heritage Monuments
at Maheshwar



3

Textile Tour
at Maheshwar



4

Visit Monuments
at Mandu



5

Handloom Fabric with
Bagh Print (Block) &
handicrafts shopping



6

Spiritual Destination
at Ujjain, Mahakal
Lok Corridore



7

Museums at Bhopal -
Tribal Museum, Museum of
Mankind & State Museum



8

Heritage Walk at Bhopal



9

UNESCO World Heritage
Sites - Sanchi & Bhimbetka
(excursions)



10

Jungle Safari at Satpura
& Pench National Parks



11

Rural experiences
at Madhai & Pench

DAY 1 / SPIRITUAL AWAKENING



The heart of
Incredible India



- Morning Arrival from Delhi/Mumbai to Indore
- Departure for Omkareshwar (75Kms, 02:00Hrs)
- Hotel Check In
- Visit to "Lord Omkar" Jyotirlinga and Siddhanath Temple (archaeological site)

It can only be termed as a blessing by the lords and mother nature, that Omkareshwar, the sacred island, is shaped like Om - the holiest symbol of Hinduism. It is adorned with lofty hills, between which the river Narmada forms a serene pool. Out of the major places to visit in Omkareshwar, the Omkareshwar Jyotirlinga shrine tops the list. Popularly known as 'Omkar Mandhata',

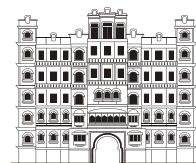
- Lunch at Temple View Hotel (MP Tourism)
- Visit Ekatma Dham – Statue of Oneness

Ekatma Dham, radiates the message of oneness through the celebration of Sanatana Dharma and the legacy of Adi Shankaracharya. Standing tall at 108 feet, the Statue of Oneness in Omkareshwar is a towering monument of spiritual enlightenment. Crafted from multiple metals, this awe-inspiring statue pays tribute to the timeless wisdom of Adi Shankaracharya and his Advaita Vedanta philosophy. It rests atop a 54-ft pedestal, supported by a 27-ft lotus petal base, creating an impressive sight to behold.

- Dinner & Night Stay

Stay Option

1. MPT Temple View, Omkareshwar - mpstdc.com
 2. MPT Sailani Island Resort, Omkareshwar - mpstdc.com
- Many more Hotels are available in and around Omkareshwar



Indore

75 km / 2.5 hours



Omkareshwar

4 km / 20 min

Statue of
Oneness



DAY 2 / HERITAGE SOJOURN



- **After Breakfast check out Hotel**
- **Depart for Maheshwar 09:00 Hrs – (60 Kms duration 1.30Hrs)**

- **Visit Rajwada & Devi Ahilya Museum**

A public courtyard-cum-hotel, Rajwada has a glass-cased statue of Ahilyabai. It also houses a Shiva temple with a golden lingam. This east-facing palace is simple in its design and portrays the austere lifestyle of Rani Ahilyabai Holkar.

- **Lunch at Narmada Resort (MP Tourism)**
- **Fort, Ghats and other monuments**

The massive fort stands on a hill with the holy Narmada on one side and the modern town of Maheshwar on the other side. The Ahilyabai fort and palace house a beautiful life-size statue of Rani Ahilyabai on a throne and a Shiva temple.

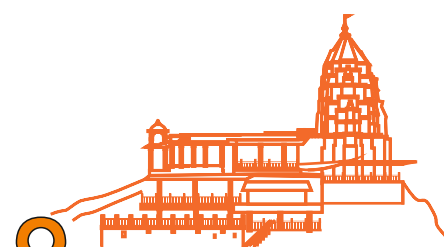
- **Visit Rehwa Society & Interaction with Local Weavers Community**

This society in Maheshwar was formed to support the local weavers and sustain their craft. Society now provides an outlet for their work and also a medium for Maheshwari saree lovers to buy these beautiful sarees. (Famous Handmade fabric)

- **Enjoy Local Story telling & boating in river Narmada in the evening**
- **Maheshwar Fort & Ghats are popular locations for films**
- **Back to hotel, Dinner & night Stay**

Stay Options

1. MPT Narmada Resort, Maheshwar - mpstdc.com
 2. Ahilya Fort Heritage Hotel , Maheshwar - ahilyafort.com
- Many more Hotels & comfortable Homestays are available in and around Maheshwar

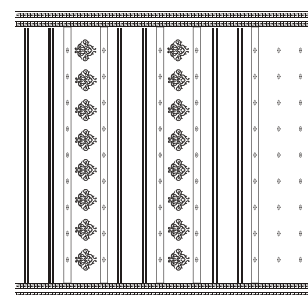


Omkareshwar

60 km / 1.5 hour



Maheshwar



DAY 3 / LOVE AND LEGACY



- After breakfast check out Hotel
- Departure for Mandu -09:00hrs (65kms. 2.00hrs.)
- Hotel Check In
- Visit famous Rani Roopmati Pavilion

The pavilion was originally built as an army observation post. From its hilltop perch, this graceful structure with its two pavilions was a retreat of the lovely queen, from where she could see Baz Bahadur's palace and the Narmada flowing through the Nimar plains far below.

- Lunch at Malwa Resort (MP Tourism)
- Jami Masjid - Inspired by the great mosque of Damascus, the Jami Masjid was conceived on a grand scale, with a high plinth and a huge domed porch.
- Hoshang Shah's Tomb -It is India's first marble edifice and is adorned with a magnificently proportioned dome, marble lattice work, porticoed courts, and towers to mark the four corners of the rectangle. Shah Jehan sent four of his great architects to study the design and draw inspiration from the tomb.

- Visit Jahaz Mahal (Ship Palace)

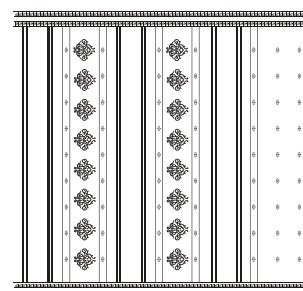
This 120-meter-long 'Jahaz Mahal' built between two artificial lakes, Munj Talao and Kapur Talao, is an elegant two-storeyed palace. With its open pavilions, balconies overhanging the water and open terrace, Jahaz Mahal is an imaginative recreation in stones of a royal pleasure craft.

- Sound & Light Show – 19:00hrs
- Dinner & Night Stay

Stay Options

MPT Malwa Resort, Mandu - mpstdc.com

- Many more Hotels & comfortable Homestays are available in and around Mandu



Maheshwar

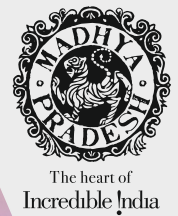
65 km / 2 hours



Mandu



DAY 4 & 5 / THE HOLY ABODE



- After breakfast Depart for Ujjain 09:00hrs (130Kms. -3:00Hrs)
- Enroute Visit "Dinosaur Fossil" Park. – 6KM from Mandu
- Enroute Visit Kelkar Museum Dhar, Shopping - Handloom Fabric with Bagh Print (Block) & handicraft items.
- Arrival Ujjain – Hotel Check In, Lunch and Relax.
- Visit Mahakaleshwar Jyotirlinga Temple

The Mahakaleshwar Jyotirlinga Temple is one of the 12 jyotirlingas, where Bhasma aarti is a daily ritual that you must not miss and this is what Ujjain is famous for. The process begins with the 'Abhishek' or the ritual bath of the shivling then smearing it with multiple offerings like curd, honey, sandal paste and finally cleaning it with milk and water. Finally, the Shivling is decorated with ash and shringaar material.

- **Visit Mahakal Lok Corridor**

To develop tourism, preserve ancient heritage, and provide world-class modern facilities to the pilgrims, the 'Mahakal Lok' project has been implemented in Ujjain.

The Mahakal Lok Corridor is surrounded by the old Rudrasagar Lake. Once you enter the corridor, you will see 108 pillars, around 200 statues, and murals that display stories of Shiva.

- Visit other important temples in Ujjain (Kal Bhairav Temple, Harsiddhi Temple, Vedh Shala)
- Dinner & Night Stay

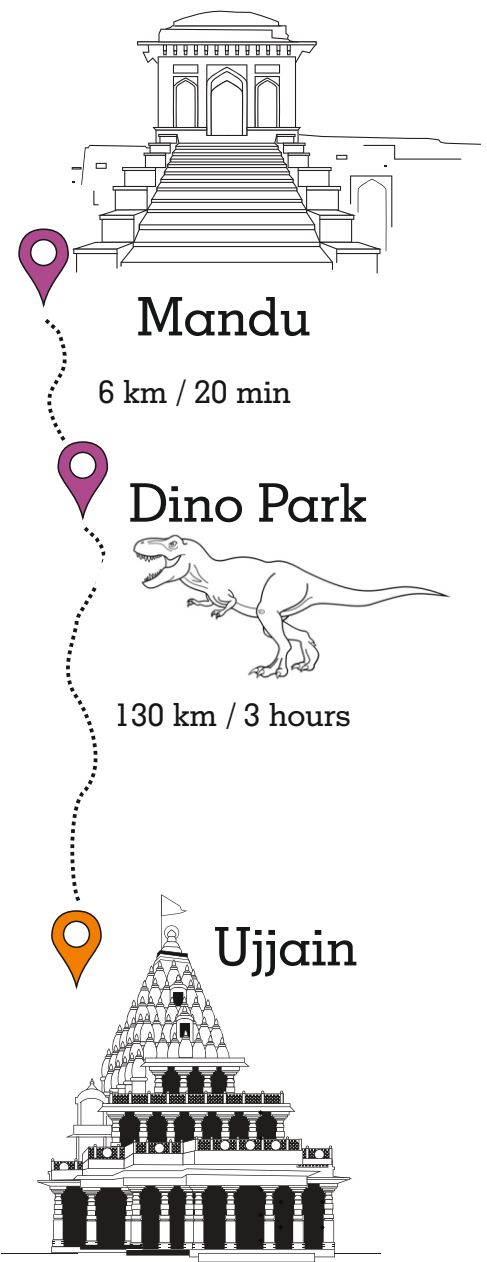
Day 5

- Bhasm Aarti at early morning- 04:00hrs (Optional)
- Depart to Indore Airport – (65 Kms, 2 Hrs.) for return journey to Mumbai/Delhi OR
- Continue your tour to Exciting destination of Bhopal and around

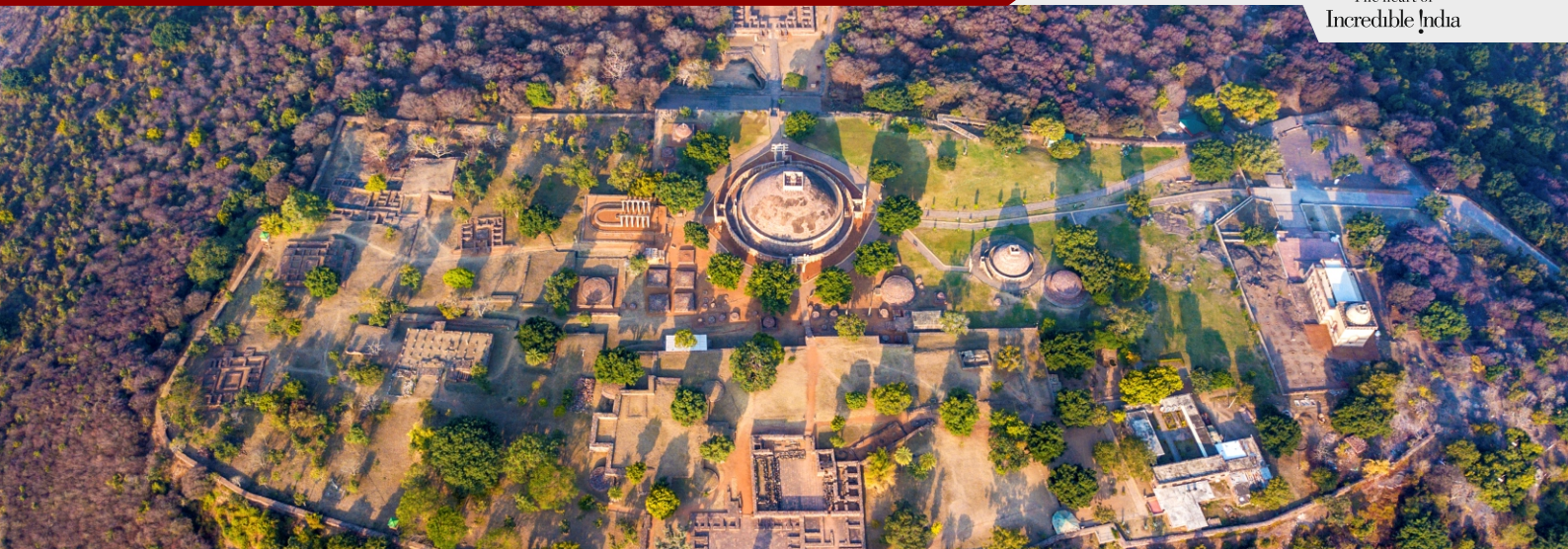
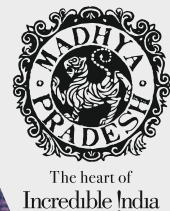
Stay Options

1. MPT Shipra Residency, Ujjain - mpstdc.com
2. Hotel Anjushree, Ujjain - anjushree.com
3. Hotel Mittal Paradise - mittalresorts.in

- Many more Hotels & comfortable Homestays are available in and around Ujjain



DAY 1 / ANCIENT ECHOES



- **Morning Flight from Mumbai/Delhi/ Indore (200kms 4hrs) to Bhopal**
- **Check In at Hotel**
- **Departure for Sanchi 12 Noon (55kms, 1.30Hrs.)**

This UNESCO World Heritage Site is famous for Buddhist Stupa & Vihar dating from 3rd century BC to 12 century AD. Built by the great Mauryan King Ashoka. The architectural structure contains the relics of the disciples of Lord Buddha.

- **Lunch at Hotel Gateway retreat (MP Tourism)**
- **Visit Udaygiri Caves** - Located only 16 km away from Sanchi, the Udaigiri Caves offers 20 caves, consisting of 18 Hindu and 2 Jain caves, boast intricate religious iconography and sculpted stories dating back to the 4th and 5th centuries AD.

- **Sound and Light Show, Sanchi -19:00hrs**

Against the stunning backdrop of the Stupas, this unique show beautifully narrates the story of these ancient monuments while evoking the life of Gautam Buddha and Emperor Ashoka.

- **Back to Bhopal**
- **Dinner & Night Stay at Hotel**

Stay Options

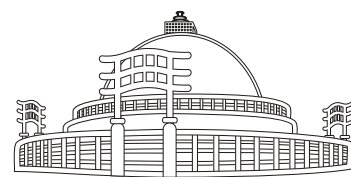
1. MPT Palash Residency, Bhopal - mpstdc.com
2. Taj Lakefront, Bhopal - tajhotels.com
3. Hotel Jehanuma Palace, Bhopal - jehannuma.com
4. Courtyard by Marriott, Bhopal - marriott.com
5. Enrise by Sayaji, Bhopal - sayajihotels.com
6. Radisson Hotel, Bhopal - radissonhotels.com
7. Lemon Tree, Bhopal - lemontreehotels.com

- Many more Hotels & comfortable Homestays are available in and around Bhopal



Bhopal

55 km / 1.5 hour



Sanchi

16 km / 30 min



Udaygiri Caves

DAY 2 / EXPLORING THE CITY OF LAKES



- Early Morning departure for Heritage Walk 07:30 Hrs.(2hrs.)

- Back to Hotel, Breakfast

- Lunch

- Visit Tribal Museum & State Museum

The Madhya Pradesh Tribal Museum in Bhopal takes you on an immersive journey through the culture and tells the stories of tribal heritage through full-scale models and colourful art installations and performances. It is one of the best museums in India where one can also witness magnificent traditional music, dance and drama performances hosted by the museum.

- Visit Museum of Mankind (Anthropological Museum)

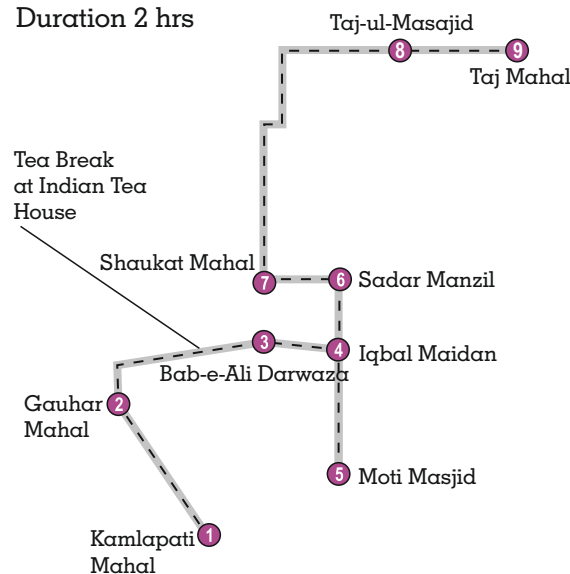
South of the Upper Lake sprawls the Indira Gandhi Rashtriya Manav Sangrahalaya a.k.a. the National Museum of Man, the largest anthropological museum in India, and one of the biggest in Asia. On an undulating terrain of over 200 acres, one can see an open-air exhibition of human habitations. Life-size dwelling units of the tribal, coastal and Himalayan villages are built in traditional architectural styles using indigenous raw materials, housing different ethnographic objects.

- Evening Cruise ride at Boat Club, Upper Lake
- Dinner & Night Stay at Hotel

Heritage Walk Route

Distance 2.5 kms

Duration 2 hrs



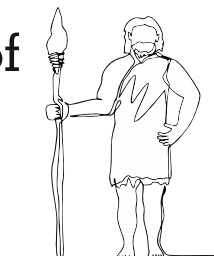
Tribal Museum

Tue - Sun
Feb to Oct, 12PM to 8PM
Nov to Jan, 12PM to 7PM



Museum of Mankind

Tue - Sun
10AM to 5:30PM



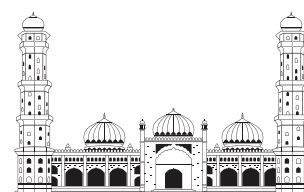
DAY 3 / FROM HISTORY TO WILDERNESS



- After Breakfast, Check Out from Hotel
- Departure for Satpura National Park at 10:00Hrs
- Enroute Visit UNESCO world heritage Site Bhimbetka (45kms, 1 Hr) Cave paintings dating back to approximately 30,000 years. Rock shelters that were home to humans, millennia ago. And a rich flora and fauna surrounding these, indeed, make Bhimbetka a gift to us from our earliest ancestors. The Bhimbetka Rock Shelter has the oldest-known rock art in India, as well as is one of the largest prehistoric complexes to be seen. An archaeological treasure, Bhimbetka has around 243 rock shelters and have earned the honour of UNESCO World Heritage Site.
- Lunch at Highway Treat (MP Tourism), Bhimbetka
- Proceed to Satpura National Park- Madhai -(90kms 2.30Hrs.)
- Check in Hotel
- Other Activities – Photography, Bird Watching, Canoeing in Back water of Tawa Dam (Please check Availability), Cycling, Interaction with villagers/ Homestay
- Dinner & Night Stay

Stay Options

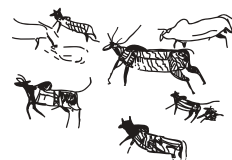
1. MPT Bison Resort, Madhai - mpstdc.com
2. Denwa Backwater, Madhai - denwabackwaterescape.com
3. Reni Pani Jungle Lodge, Madhai - jehannuma.com
4. Forsyth Lodge, Madhai - forsythlodge.com



 Bhopal

45 km / 1 hour

 Bhimbetka



90 km / 2.5 hours



Satpura Tiger Reserve

DAY 4 / A SAFARI TO REMEMBER



- **Early morning Jungle Safari at Satpura National Park, Madhai 06.00 - 10.00 Hrs (4 Hrs)**

Satpura National Park is highly recognized for its tranquil surroundings and its rich flora and fauna. The Satpura range, which has many towering hills and stunning waterfalls, is bordered by the Pachmarhi and Bori Sanctuaries. The experience of a river and a forest safari can be experienced in this national park of central India. A night Jungle safari in the buffer zone is another option for experiencing night-time activity, along with the normal morning safaris. Your journey will undoubtedly take you to the serene habitat of a variety of species, including the leopard, sambar, chital, nilgai, flying squirrel, and Indian giant squirrel, as well as a rich flora that includes sal, teak, tendu, mahua, bel, bamboo, and medicinal plants.

- **Back to Hotel, relax**
- **Lunch at 12.00 noon**
- **Departure for Pench Tiger Reserve 13:00Hrs.(250 Kms, 6hrs.)**
- **Check in Hotel**
- **Dinner & Night Stay in Pench**

Stay Options

1. MPT Kipling's Court, Pench - mpstdc.com
 2. Baghvan Taj Safaris, Pench - tajhotels.com
 3. Tathastu Resort, Pench - tathasturesorts.com
 4. Riverwood Resort, Pench - waxpolhotels.com
 5. Jungle Home Resort, Pench - junglehomepench.com
- Many more Hotels & comfortable Homestays are available in and around Bhopal



Satpura Tiger Reserve

250 km / 6 hours



Pench Tiger Reserve

DAY 5 / RURAL CHARM AND NATURE'S BLISS



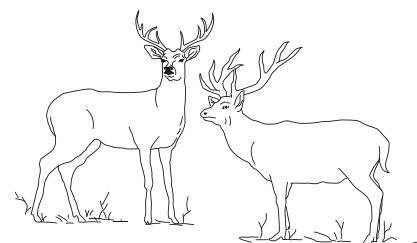
- Early morning Jungle Safari at Pench National Park, 06.00 - 10.00 Hrs (4 Hrs)
- Back to Hotel, Breakfast

A magnificent expanse in Madhya Pradesh, Pench Tiger Reserve, though is a tiger territory, it also shelters a dense population of cheetal (Spotted Deer), followed by leopard, sambhar, gaur (Indian bison), chousingha (four-horned antelope), chinkara (Indian gazelle), barking deer, small Indian civet, and porcupine. It is also home to the migratory birds such as Malabar pied hornbill, Indian pitta and osprey. No child has come to their teenage years, without reading or watching 'The Jungle Book.' The escapade of the little boy Mowgli, the Bagheera, and the villain Sher Khan written by Rudyard Kipling was inspired by the beauty of Pench National Park

- Lunch at 13.00 Hrs
- Activities – Pottery Village (Pachdhar) Visit
- Village Tour (Kohka) Interaction with villagers
- Nature Walk (with guide)
- Photography, Bird Watching, cycling
- Dinner & night stay at Resort

Day 6

- After Breakfast Departure to Nagpur Airport (90 Km 2hrs)
- Proceed journey to Mumbai / Delhi or further destinations



Pench Tiger Reserve



90 km / 2 hours



Nagpur



The heart of
Incredible India

Madhya Pradesh Tourism Board

Toll Free : 1800 233 7777

Follow us



www.mptourism.com